

Make some
Memories
in
Meriwether County



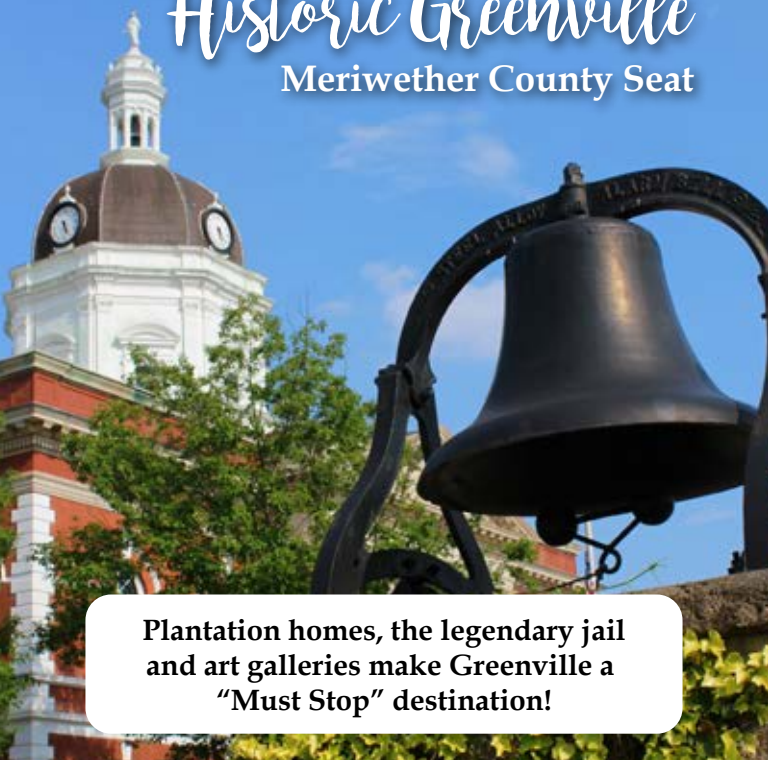
Gay • Greenville • Lone Oak • Luthersville
Manchester • Warm Springs • Woodbury



From past to present, water to land!

Historic Greenville

Meriwether County Seat



Plantation homes, the legendary jail and art galleries make Greenville a "Must Stop" destination!



What's Inside

Sights	pg 2
Entertainment	pg 10
Farms	pg 18
Shopping	pg 22
Events	pg 28
Lodging	pg 34
Dining	pg 38

Welcome to Meriwether

Meriwether County Georgia offers the things that stories are made of. From the covered bridge built by freed slave and self-taught engineer Horace King, to Franklin D. Roosevelt's Little White House, our county offers diversity for visiting and living. Why not plan your next trip to Meriwether County? You may enjoy fine dining, shopping, camping, hiking Pine Mountain, fishing the Flint, biking, driving the Chattahoochee-Flint Heritage Highway, or tour the Presidential Pathways. Find some rest and relaxation in our various lodging establishments.



Memories
await in
Meriwether

From past to present, water to land!

PO Box 9
91 Broad Street
Warm Springs, GA 31830
706-655-2558

meriwethertourism.com
meriwetherchamber@windstream.net
facebook.com/meriwethertourism



Georgia Power

***A Proud Community
Partner***

Sights

HISTORIC GREENVILLE DRIVING TOUR



Experience beautiful historic Greenville with a self-guided driving tour via a mobile-app, presented by The Meriwether Historical society. Enter the grace of a bygone era, where elegance and

craftsmanship adorn even the humblest of dwellings. Hear tales of perils, heroines and scoundrels. Also, available a free driving guide from The Visitors Information Center at 1 Broad Street in Warm Springs, GA 31830, 706-655-3322. meriwethertourism@windstream.net

THE LITTLE WHITE HOUSE

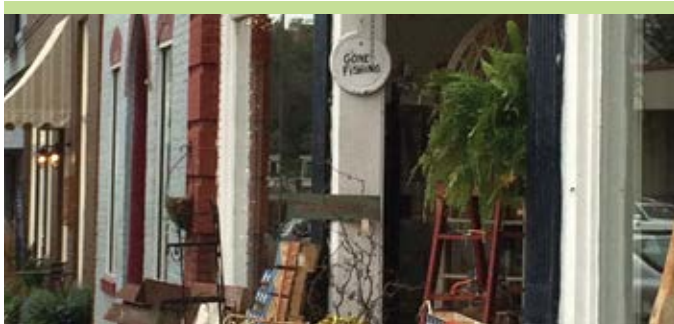
Roosevelt's Little White House is one of Georgia's most popular historic sites, drawing more than 100,000 visitors each year. Tours are given daily of FDR's home, which has been carefully preserved very much as he left it, as well as the servants and guest quarters. The "Unfinished Portrait" is featured in a museum that showcases many exhibits, including FDR's 1938 Ford convertible with hand controls. Open daily from 9AM-4:45PM, except Thanksgiving, Christmas and New Years Day. 401 Little White House Road, Warm Springs 706-655-5870. www.gastateparks.org/LittleWhiteHouse



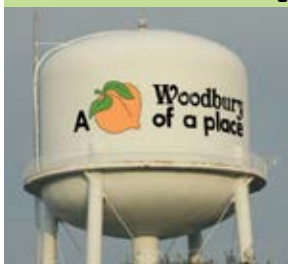
Little White House Flag Walk



Come Shop, Tour, & Play!



Shops on Main



Landmarks



Peach Farms



Red Oak Creek Covered Bridge



Flint River



Lake Meriwether

Woodbury Welcomes You!

706.553.2011 CityofWoodburyGA.gov

MANCHESTER MILL & VETERAN PARK

Built in 1908 by Mr. Callaway as a textile Mill and known for its twin smoke stacks this recently burned structure is sporadically being renovated for continued use. A monument constructed from



the original boiler room doors is featured in front of the Mill with the engraved names of Meriwether County Veterans and accompanied by our Eternal Flame and military flags. Located on 10 Callaway Street 31816, Manchester, Ga.

MERIWETHER MURALS AND MONARCHS



Historic murals painted by Hapeville-based artist, John Christian are featured in each of the seven cities of Meriwether County. Each mural highlights people, events and locations that tell the city's

story, making touring "Meriwether Murals and Monarchs" a memory making must. Accompanying butterfly gardens is a projected goal that is still in progress but can currently be enjoyed in multiple locations. Don't forget to look for the common thread that ties the cities of Meriwether County together, woven into all seven murals.

THE RED OAK COVERED BRIDGE



An 1840's covered bridge, built by freed slave and noted bridge builder, Horace King, attracts hundreds of visitors every year. At 391 feet, including the approaches, this structure is the oldest

and longest wood covered bridge still in use in Georgia and may very well be one of the sturdiest. This "Kissing Bridge" is still open to traffic and was featured in the film "Lawless". 4 miles North of Woodbury, Ga. on Covered Bridge Road. GPS coordinates:33.038403-84.551143

Discover Manchester

The Magic City

A great place to visit.
An even greater place to live.

Manchester
Downtown
Development
Authority
706-846-3141



ROOSEVELT WARM SPRINGS

Founded by President Franklin Delano Roosevelt in 1927 as a polio rehabilitation facility where patients could heal together in the warm and mineral rich springs. Now RWS focuses on continuing President Roosevelt's legacy through empowering individuals with disabilities to achieve personal independence and employment success through Vocational Rehabilitation programs. Guided tours offered weekdays at 11AM and 2PM. 706-655-5670



SCENIC BYWAY

The Meriwether-Pike County Scenic Byway was approved on March 17, 2005 by the Georgia Dept of Transportation. The Byway celebrates the unique legacy of Franklin Delano Roosevelt and retraces some of FDR's favorite routes through Meriwether County, many of which have changed very little in the past 70 years. Travelers can pick up the route at any point throughout the 55-mile loop; however, the logical departure point is the Warm Springs Welcome Center, a recreation of the depot where FDR would arrive into Warm Springs.



The Warm Springs Welcome Center, a recreation of the depot where FDR would arrive into Warm Springs.

WARM SPRINGS NATIONAL FISH HATCHERY



The Warm Springs NFH consists of 56 acres with 40 ponds totaling 18.23 acres of water. The hatchery's primary area of concern is Georgia but work performed benefits species throughout the 10-state Southeast Region. Come visit our facility and your family or class can enjoy a hike on our nature trail, bird watching, view wildlife in our display ponds, and learn about fish and wildlife in our public aquarium. Free Admission, Open year round 8am – 4pm Sunday – Saturday. 706-655-3382. 5308 Spring Street, Warm Springs GA 31830

Free Admission, Open year round 8am – 4pm Sunday – Saturday. 706-655-3382. 5308 Spring Street, Warm Springs GA 31830

For all your healthcare needs visit us at

The **Medicine**
Cabinet 

1194 Warm Springs Hwy
Manchester, GA

706-846-2002



TRAIN OBSERVATION DECK

The Railfan Observation Deck is located behind the Main Street Shops of Manchester with a perfect view of the Yard. This deck is dedicated to the memory of Tyron Elliot, a local attorney and railfan who spear-headed the annual Railroad Days celebration from its inception until his death in 2010. The gazebo is equipped with two picnic tables and is a great lo-



cation for photographs! You can expect about 40 trains during a 24-hour period to slowly roll through this Waycross split of Atlanta and Birmingham Mains.

TRAMMELL HOUSE BED & BREAKFAST

Experience a bit of history at this 1840 ancestral house which was the former home of Captain John William Trammell. This B&B, located in Luthersville, has been restored and furnished in the keeping with the era featuring some modern amenities while maintaining the nostalgic feel with original hand planed boards, chimneys and fireplaces. Four private bedrooms are within the two-story home, each with a private bath. Captain Trammell's tomb and burial spot, at the Luthersville cemetery, is within walking distance. 10 Park Street. Find us on Facebook. 770-927-2803 www.thetrammellhouse.weebly.com



Triple B
GARDENS LLC

Triple B Gardens offers native and non-native, pesticide-free plants that will help you create your very own wildlife habitat. A family-owned and operated, Georgia-licensed nursery, provides plants that attract birds, bees and butterflies to your backyard.

6693 Roosevelt Hwy. • Warm Springs GA • (706) 575-6164

Follow us on Facebook

WOODBURY RESEARCH FACILITY

These old satellites have been used by numerous companies over the years for space research and extra-terrestrial communication. They were also used in AMC's *The Walking Dead*. This is one of many sites of the TV show filmed in Meriwether County. 4226 Cove Rd, Woodbury GA 30293



Woodbury Research Facility

Meadows Insurance Agency, Inc.
Meadows Hale Realty, Inc.

Penny Meadows Hale
Jon Hale, Jr.

25 East Main Street
P.O. Box 318
Manchester, GA 31816

706-846-3161
Fax: 706-846-4494
phale1@windstream.net



XTREME X RIDER
Live to Ride Ride to Live

Warm Springs, Georgia

Open
Friday, Saturday, Sunday, Monday

60 Lil Sturgis Street

Available for motorcycle
events and destination
rides

706-655-2463

www.xtreme-rider.com

AVIATION



The Roosevelt Memorial Airport in Warm Springs is home to the Southern Eagles Soaring (SES), a private gliding club. SES is made up of members from both Alabama and Georgia and has a tow plane and a fleet

of club gliders. Flights are on most Saturdays from 10am-6pm and Sundays from noon to 6pm, weather permitting. Visits are welcomed and rides available. Just 3.8 miles north of Warm Springs on Roosevelt Hwy. For more information email or call Wally Berry berrywd@auburn.edu / 334-740-1994 Mark Blace at blacefamily@gmail.com / 770-783-0645

CAMP MERIWETHER

Established in 2001, located in Luthersville, Camp Meriwether features 270 acres of rolling hills, shady woods and open fields. A variety of accommodations are available including primitive camping, platform tents, air-conditioned cabins, and troop houses for large groups. Best known for its robust equestrian program that caters to all horseback riding skill levels, Camp Meriwether is generally open to the public during the week other than through summer months. Please call to make reservations. 770-927-1020 or 1-800-771-4046. 653 Meadows Boone Rd. 30251 girlscoutsatl.org - Camp Meriwether

EVANS R-E-A-L-T-Y

Residential | Land | Commercial | Farms

Monica Evans
Broker
706-575-2884

Hillary Evans Flynn
Agent
706-975-4591

Piper Gresham
Agent
706-579-0269

Members of the Columbus Board of Realtors

412 N. 5th Ave. | Manchester, GA 31816

706-846-2000

evansrealty.georgiamls.com





Manchester

FARM GARDEN & HARDWARE
 1106 A Warm Springs Highway
 Manchester, GA 31816
 706.846.3101



Full Line of
Guns & Ammo



Full Line of



EQUESTRIAN

Riding trails cover Pine Mountain from the creek bottom to the Overlook with a breathtaking view of Pine Mountain Valley, Lake Franklin, and the group camps built in the 1930s by the Civilian Conservation Corps (CCC). Four major trails are available, with riding times ranging from 1-4 hours or even overnight. Horses may be rented or you can bring your own. Shoes or boots are recommended for most horses. Open Tuesday



through Sunday 10am-5pm. rooseveltstables.com
 Call to reserve 706-628-7463 GPS coordinates: Latitude: 32.842207 / Longitude: -84.790521

FLINT RIVER

A day of fun awaits you on this beautiful 344 mile long river, one of only 40 left in the US that flow for more than 200 miles unimpeded. Also revered as



one of the most ecologically diverse river basins in the Southeast. Woodbury's Hwy 18 Bridge is a great location for picnicking, canoeing, rafting, and fishing. A public boat launch gives access for a 13-mile trip to Sprewell Bluff or, for the river enthusiasts, a 20-mile trip to 36 Bridge, in nearby Thomaston, Ga. flintriverkeeper.org

GEOCACHING

Outdoor treasure hunting in the vast terrain of Meriwether County will be sure to please with three options for geocaching, each organized around a theme. Woodbury has The Real Woodbury Zombie Geoquest, built around the hit t.v. show "*The Walking Dead*". Manchester's is the Magic City RailQuest, which focuses on the city's rich past in the railroad industry. Our newest trail is in the historic city of Warm Springs, home to FDR's Little White House. This trail is based on Marvel Comics and is called the Warm Springs Marvelous GeoQuest. For more information or questions, contact Meriwether County Chamber of Commerce & Tourism at 706-655-2558



Flat Shoals, Gay GA
Photo by Kevin Terrell

WEST 85

Package Store

Hours:

Monday-Thursday

9 a.m. - 9 p.m.

Friday-Saturday

9 a.m. - 10 p.m.

Closed Sundays

13673 Whitehouse Pkwy.

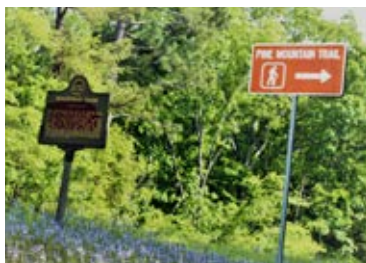
Woodbury, GA 30293

706.553.2524



HIKING/WALKING

The Pine Mountain Trail is a 23 mile footpath that crosses and follows the beautiful Pine Mountain ridge in west central Georgia. Sparkling streams, misty waterfalls, rock outcroppings, and



scenic overlooks await your discovery. The two entrances for Meriwether County are at the WJSP TV Tower on Hwy 85 and the Rocky Point parking lot on Hwy 190.

HUNTING



Meriwether County offers extensive opportunities for hunting both big and small game. We are known for our vast land plots with large Whitetail Deer, Wild Boar, Rabbit, Duck, Dove, and Quail. There are numerous hunting clubs, shooting ranges, gun stores and food

plot services in the county. After your hunt, contact one of our local taxidermist to mount your prize. Contact meriwethertourism@windstream.net for more information.

LAKE MERIWETHER



Hiking, boating, fishing and even disc golf await you at this serene spot. Multiple camp sites for primitive camping as well as drive-thru lots for RV's have electric & water connections with bathrooms conveniently located. Numerous picnic tables, each with a grill or a large pavilion

make for easy picnicking. For additional family fun, try the professionally designed 10 basket Disc Golf Course that flows beautifully through the trees all around the 144 acre lake. Bank or boat fishing offers bass, bream, catfish and crappie varieties. Also, stroll or jog our new walking trail winding through over 6 miles of beautiful countryside. 728 Lake Meriwether Road, Woodbury, 706-553-5247

GOLFING

Pebblebrook Golf Club lies in the rolling hills of the scenic countryside between Manchester and Woodbury on Hwy 85. Pebblebrook offers 9 beautiful holes, carefully designed by industry experts for the optimal golfing experience for all skill levels. 1116 Pebblebrook Road, Woodbury, GA / 706-846-3809 or 706-846-2980

WARM SPRINGS CELLARS

Warm Springs Cellars offers a taste of Georgia's finest in historic Warm Springs, GA. Sample and purchase a selection of Georgia's premium wine, craft beer, choice coffee, and



tea. Also offering selections of farm cheeses, chocolates, and pastries. Stay and sip the glass of your choosing while listening to local live music most Saturday evenings. 706-655-4155

A taste of
Georgia's
finest wine,
craft beer,
coffee & tea.
Located in
Downtown
Historic
Warm Springs



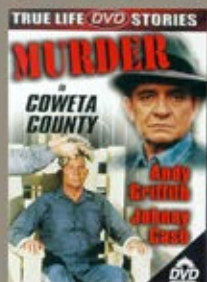
Thursdays 12-6pm
Fridays 12-8pm
Saturdays 12-8pm
Sundays 12:30-6pm

706-655-4155
warmspringscellars.com
Follow us on Facebook

Meriwether County has
been used in numerous films
and TV shows. We are proud
to be a part of these projects
and look forward to many
more to come.



KODAK ET 160 5077



23A

24



Abby Manor

AT DOGWOOD FARM

Abby Manor is not only a stunning venue space, but also a part of Meriwether County history! Originally a 13,000 square foot horse stable that was famously part of Dogwood Farms, our venue was once home to champion thoroughbreds and their training grounds.

The converted space is now one of the largest and most beautiful barn venues in the Southeast. From gorgeous flowing fabrics and crystal chandeliers, to a one of a kind bridal suite and so much more, we'd be honored to host the event you've been dreaming of.

Surrounded by over 200 acres of rolling green pasture and forest, you're sure to find the picture perfect spot for lasting memories.

Contact us today at

404-800-9735

abbymanorevents@gmail.com

Facebook [@AbbyManorEvents](https://www.facebook.com/AbbyManorEvents)



Photo credit to: SnapScott Photography, Brook Holloway, Paulina Epperson, Brooke Miller, Chasity Posey, Tiffany Dawson and David Schumann



DFM GRAPHICS

Anything Creative

Printing
Design
Signs
Apparel

Websites
Video
Fulfillment
Warehousing

And yes, to
whatever else
you may need.

678-621-3732 • sales@dfmgraphics.com

DFMGraphics.com



PeachPics.net



PeachPics
PHOTOGRAPHY & VIDEOGRAPHY

Farms

BOGLE FARMS

A converted dairy farm, this family owned event center helps guests experience a rural lifestyle coupled with beautifully renovated facilities and modern conveniences. Walking and biking trails through forests and meadows create the opportunity to connect with wildlife. Located at 1785 Harman Road, Greenville 30222 visit www.boglefarm.com for more information.



*Waterfall Pool, Open Pavillion Deck & Stone Fireplace
4 Cottages that can sleep a total of 22 people
Perfect for Weddings, Group Events & Family Retreats*



1785 Harman Road
Greenville, GA 30222

647.912.1801

www.boglefarm.com

FITZGERALD FRUIT FARMS

Fitzgerald Fruit Farms in Woodbury has proven to be a leader in innovation, technology and stewardship, producing the highest quality peaches in the South. Visit "The Shed" on beautiful Imlac Road in Woodbury. There you will find delicious produce, and a selection of jellies, sauces, canned goods and homemade peach ice cream. Apples, blackberries and plums are also grown seasonally. Open May through October. 3355 Imlac Road (706)553-2795 www.fitzgeraldfruitfarms.com

OPEN SEASONALLY MID-APRIL THROUGH NOVEMBER



Enjoy delicious peach ice cream as you browse our selection of sweet, tree-ripened peaches.



Peaches - Strawberries
Summer/Fall Garden Produce
Jams - Salsa - Chow Chow
Barbeque Sauces

YOU-PICK STRAWBERRIES
LATE FALL AND SPRING
APPLES AVAILABLE SEPT.-NOV.

3355 IMLAC ROAD + WOODBURY, GA
VISIT [FACEBOOK.COM/THEPEACHSHED](https://www.facebook.com/thepeachshed)
FOR HOURS AND AVAILABILITY
706-553-2795

HUDSON FARMS

Visit Hudson Farms for peaches and more. Enjoy fresh nectarines, plums, tomatoes, peaches, blueberries, grapes and figs from May 15th – Sept 15th. 1680 Raleigh Road, Manchester. Roadside stand on Main St. in Woodbury. (706) 553-9591

LONE OAK FARMS

You can pick your own blueberries from July until October, seven days a week during blueberry season from 8am-6pm. 7633 Forrest Road, Grantville. 678-416-3955 or phillipdow@bellsouth.net

THE VINEYARD

Enjoy the sweetest muscadines in Meriwether County picked for you in pint and gallon size baskets. Open seasonally Sept & Oct. 110 Street Main St. Luthersville road side parking. 770-550-4241



WARM SPRINGS WINERY



Specializing in unique muscadine wines from locally grown grapes. Vinted and bottled on premises. Tasting room is open daily from noon to 6PM. The loft avail-

able for private parties. Follow us on FaceBook for seasonal blends and scheduled painting parties. 7227 Roosevelt Hwy, Warm Springs 706-655-2233
eroce@windstream.net

WARGO'S PUMPKIN PATCH

Open all of October on Saturday and Sunday. Wargo's Pumpkin Patch is family owned with FREE Admission. Wargo's offers hay rides, corn maize, fall pictures, arts & crafts and face painting. You can purchase boiled peanuts, fried apple pies and, of course, PUMPKINS. Donations are accepted and given to Camp Rockridge in Franklin Georgia. Check us out on FaceBook for pictures and more details. 2041 Lone Oak Road, Luthersville. 770-377-8635



Lake Meriwether

P

Parker Place Events

Weddings and Special Events



Victorian Hotel,
Train Depot
and Historic Barn

~
Weddings,
Receptions,
Rehearsal Dinners
and Private Parties



Paul and Bonnie Parker, Owners

77 West Oak Street (HWY 54), Luthersville, Ga. 30251



770-927-9813 678-877-0313

Meriwether Historical Society



meriwethertourism.com/historic-sites

Tour Historic
Greenville from the
comfort of your own
vehicle. Get your
printed guide from the
Visitors Information
Center in Warm
Springs or visit our
website to get the
mobile-app.



Shopping

ANTIQUING IN WOODBURY

Treasure hunting is at its best in downtown Woodbury, which is home to three antique stores on Main Street. Each shop offers a large variety of unique finds and all at a stone's throw away. Sometimes you never know what you might need until you see it.

ARTISANS ON THE SQUARE

Artisans on the Square opened in November 2016 in the historic Hill Brothers Corner on the west side of the Greenville square, built in 1896 and owned by the Hill Family until purchased in 2012. Artisans on the Square hosts six to eight Special Exhibits every year featuring one or more artists and genres of art for a month at a time. These exhibits introduce artists and types of art not typically experienced in our area. Thurs – Sat, 11AM– 5PM 404-386-1328

DOWNTOWN WARM SPRINGS

Take a step back in time and experience our Southern charm and hospitality. History is evident in the 100-year-old restored buildings. On the bustling Main Street and through the alleyways you will find additional courtyard charms, which provide a quaint shopping experience. All within walking distance to the world-famous Bulloch House with its fried green tomatoes and buffet. Extended hours for most shops during the holidays.



Downtown
Warm Springs



HIGH COTTON Antique Mall

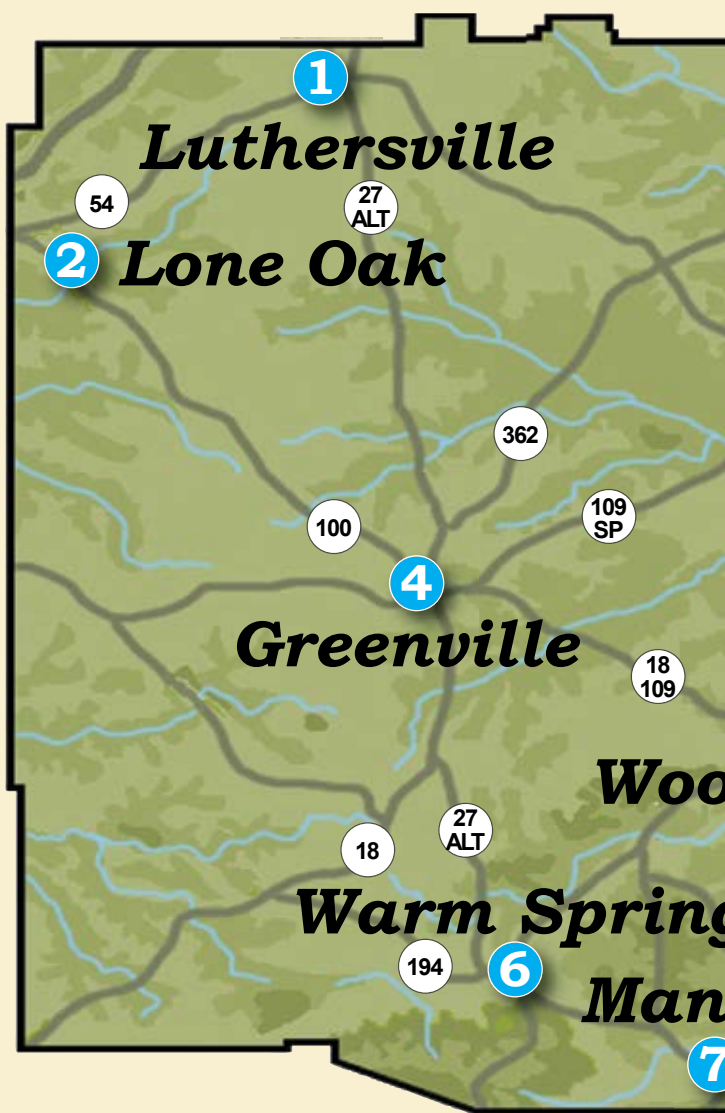
"Something For Everyone"

706•553•3960

Monday - Saturday 10am-6pm
Sunday 1pm-5pm
Main Street, Woodbury



Meriwether County



er nty



GREENVILLE

- Abby Manor
- Artisans on the Square
- Big Chic Greenville
- Bogle Farms
- Court Square Cafe
- Clinton's
- DFM Graphics
- Meriwether Historical Society
- The Parterre
- Peach Pics Photography
- Print Shop Gallery
- U Save It Pharmacy

GAY

- Shady Days

LUTHERSVILLE

- Parker Place
- Red Rooster
- Trammel House
- Valentine Orchard

MANCHESTER

- Big Chic Manchester
- Bluebird Cottage
- Budget Inn
- Evans Realty
- Manchester Farm & Garden
- Meadows Insurance/Realty
- The Medicine Cabinet
- Western Inn

WOODBURY

- Blackbird Café
- Chicken Shack
- Fitzgerald Farms
- High Cotton Antique Mall
- Home Is Where The Heart Is
- Smitty's Café
- West 85 Package Store

WARM SPRINGS

- Best Western
- Bulloch House
- Dinner's Ready by Chad
- The Dressing Room
- Hotel Warm Springs
- Meriwether Country Inn
- Meriwether Steak Company
- Triple B Gardens
- Warm Springs Cellars
- Xtreme Rider

**Every wall
needs a piece of fine art**



**Greenville GA
is where you find it.**



**Two locations
Downtown
across from
the Courthouse**



397 LaGrange Street



112 South Talbotton St

**ArtisansontheSquare.gallery
PrintShopGallery.com**

Thus - Sat 11am - 5pm (404) 386 - 1328



THE PRINT SHOP GALLERY

A consignment of local art you'll love with a wide range of styles and mediums. Opened in January of 2011 in a historic 1896 building on the East side of the Greenville square. Both The Print Shop Gallery and its sister gallery, Artisans On The Square, sell only original art and represent regional artists from Georgia and Alabama. Their mission is to establish Greenville, GA as a destination for fine art. 112 S. Talbotton Street. Thurs - Sat, 11AM - 5PM www.printshopgallery.com



*A boutique atmosphere
with great prices
and personal service!*

**Monday-Saturday 10am - 6pm
Sunday Noon - 5pm**

**88 Broad Street
Warm Springs, GA 31830
(706) 655-2181**

Owners - Wade and Barbara Casteel



Home Furnishings • Antiques
Art from Local Artists
Children's & Womens Upscale
Consignment & New Items

18157 Main Street • Woodbury, GA 30293
678-523-9126

Open Tues-Sat: 10-6 & Sun: 1-5 Closed Mondays
Find us on Facebook!

Events

CANDLELIGHT WEEKENDS

Warm Springs will be aglow with candles, twinkling lights, garlands and bows during the annual holiday Candlelight Weekends. Yuletide music will be heard over the one square mile village, taking you back to "memories of the past". Music by local performers, Candlelight Tour Run, Parade, Santa Visits, Special Activities, Extended shopping hours. www.meriwethertourism.com
706-655-3322 or 706-655-2609



CHRISTMAS CRAFT EXPRESS

Make tracks to the Manchester Mill. Unique crafts, delicious food items, Holiday decorations and gifts galore. Second Saturday in November. Free Admission. 10 Callaway Street, Manchester. 706-975-4546

COTTON PICKIN' FAIR

A national - award - winning festival held since 1972 on the Gay Family Farmstead. Some 350 exhibits provide a large range of Art, Antiques, and Crafts nestled in and around historic farm buildings dating from 1891. Delicious southern foods are cooked on site and regional entertainment make this a truly unique family outing. First weekends of May and October from 8AM to 5PM, 18830 Hwy. 85, Gay 30218 706-538-6814



Made In America



Gifts & Gourmet Made in the USA

*5737 Spring Street
in Historic Warm Springs*

BluebirdCottageGifts.com



FALA DAY

STCGA will be hosting Fala Day Saturday, October 13, 2018 at President Franklin D. Roosevelt Little White House in Warm Springs, GA. Fala Day is a celebration of the remarkable and enduring legacy of the strong and inspiring bond between President Roosevelt and his beloved Scottie Fala. Come join us for a memorable and fun filled day. www.stcga.biz/faladay

FALA TO THE RESCUE

This annual event is held the first Saturday in November, in Warm Springs, to raise money for Scottie Rescue and Canine Cancer Research. Put on by the Scottie Club of the South/Saving Our Scotties (SCOTS/SOS) www.scottishterrierclubofthesouth.com dahlmkr@gmail.com



Find our group on Facebook, FALA TO THE RESCUE, and follow our mascot on social media @Hayleyscottiemascot

FREEDOM CELEBRATION

Celebrate our Independence in Historic Warm Springs with the Freedom Celebration on Saturday before July 4th Weekend with a parade at 10AM followed by activities for the kids and family, live music and sidewalk sales.



HARVEST HOE DOWN

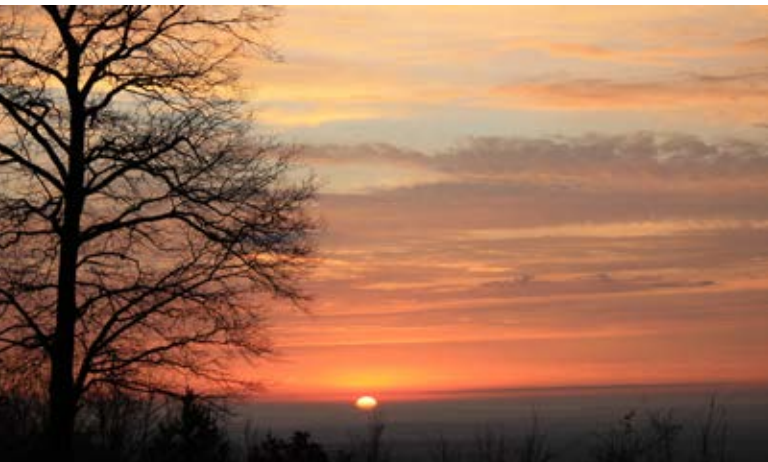


It's Time for Fall Fun in the quaint little city of Warm Springs. Come celebrate the beauty of the brilliant fall colors surrounding our Historic City. Enjoy live entertainment, hand

crafted gift items, regional artists, children's activities and delicious food, all while strolling thru Downtown Warm Springs with its many unique shops. Second Weekend in October. 706-655-3322

INDEPENDENCE DAY FIREWORKS

Start your Independence holiday here in Meriwether County at The Manchester Mill at 10 Callaway Street in Manchester 31816 on July 3rd. Food vendors, entertainment and activities for all ages are scheduled for the evening with a firework show at 10PM. 706-975-4546



*Come Visit Our Side
of the Mountain.*



City of
MANCHESTER

116 2nd Street • P.O. Box 366 • 706.846.3141
www.manchester-ga.gov



LOCO DAZE

This festival offers all things arts and crafts in one location for your viewing and buying pleasure. Food vendors and activities for the kids make this a perfect event for all ages. Scheduled for the fourth Saturday of March at the Manchester Mill at 10 Callaway Street 31816 For more information, contact Carla Corbin at 706-975-4546 or manchesterrailroaddays@gmail.com

MANCHESTER RAILROAD DAYS

Celebrate Manchester's Railroad heritage with vendors from all over at this annual event which occurs the third weekend in October 9am – 4pm. Held at the Manchester Mill at 10 Callaway Street 31816 with indoor and outdoor activities. 706-975-4546 for more info or manchesterrailroaddays@gmail.com



MERIWETHER MILES

This touring adventure held in the summer at Lake Meriwether, 728 Lake Meriwether Road, Woodbury, GA. Free T-shirt with early registration. An annual event held in conjunction with the Peaches in The Pines Festival. Routes include short, medium and long distances to appeal to all levels of cyclists. meriwethercountychamber.org/meriwether-miles-bicycle-ride. Routes: 15, 36 or 62 miles. Questions: 770-927-2847



PEACHES IN THE PINES



Enjoy a down-home country-style arts and crafts festival at beautiful Lake Meriwether at 728 Lake Meriwether Road, Woodbury. Held on the second Saturday in June, the festival features live entertainment, delicious food, home grown produce and special activities for the kids. 706-655-3322 or meriwethertourism.com/peaches-in-the-pines/

SHADY DAYS IN GAY

Over 200 exhibitors from all over the Southeast convene to showcase amazing talent and creativity in downtown Gay. Great food and a special kids zone with many activities. 9am-6pm on Saturday and 9am-5pm on Sunday. First full weekend in May and October. Free Admission. 18785 Georgia Highway 85, Gay GA. 706-977-8548 www.shadydaysingay.com

SPRING FLING IN WARM SPRINGS

The annual "Warm Springs Spring Fling" is the second Saturday in April. Celebrate the arrival of spring and enjoy arts and handmade craft exhibitors, antique dealers, children's area, delicious foods and snacks combined with some good ol' fashioned entertainment. warm-springsga.us/springflingapril



Meriwether County

takes pride in its history as it looks forward to its future. We are bursting with opportunity because of our business-friendly attitude & central location between Atlanta, Macon & Columbus.

With a modern day population of over 21,000 we have the resources and amenities you need blended with small town values.



The government of Meriwether County welcomes you and invites you to explore our website for a comprehensive guide to our departments and services.

 meriwethercountyga.us



KRISTEN CARTER PRICE
DIRECTOR

**SHADY DAYS IN GAY ARTS
& CRAFTS FESTIVAL INC.**

*12 Don't-Miss Georgia Fall Festivals
by ExploreGeorgia.org*

P.O. BOX 215 • WOODBURY, GA. 30293

706-977-8548

WWW.SHADYDAYSINGAY.COM

Visit us on Facebook and Instagram.



Lodging

LUTHERSVILLE, GA

Trammell Bed and Breakfast
678-378-0161

MANCHESTER, GA

Budget Inn
706-846-1247

Western Inn and Suites
706-846-4410

WARM SPRINGS, GA

Best Western Hotel and Event Center
706-655-4015

Hardaway Cottage
770-778-0822

Hotel Warm Springs
706-655-2114

Killian House Retreat
770-778-0822

Meriwether Country Inn
706-655-9099

Mountain Top Inn & Resort
706-663-4719

Ramsey RV Park
706-977-6204

Warm Springs Retreat
888-829-7076

WOODBURY, GA

Lake Meriwether Camping & RV Sites
706-553-5247



52 Deluxe Hotel Rooms, Fitness Room and a Stunning View from The Pavilion and large Fire Pit

2526 White House Pkwy. • Warm Springs, GA 31830

706-655-4015

*Newly Built Restaurant Cafe & Bar
Opened for a Full Hot Breakfast Buffet
Dinner and Bar*

Come by and see us! Special Event Rentals Available



TRAMMELL HOUSE BED & BREAKFAST



Circa
1840

10 Park St
Luthersville, Georgia 30251
Approximately 6 miles from I-85

(678) 378-0161

trammellhouse@weebly.com

[Facebook.com/trammellhouse](https://www.facebook.com/trammellhouse)
thetrammellhouse.weebly.com

Inquire about Special Events

Lovely Ancestral Home

Cable TV/HBO/ESPN

Jacuzzi Suite • Outdoor Pool • Fax & Copy Services



**Western
Inn
& Suites**

**1119 Warm Springs Hwy.
Manchester, GA 31816
for reservations call
706-846-4410**

Over a Hundred Years of Hospitality



*Located in Historic Warm Springs, GA
47 Broad Street • Warm Springs, GA 31840
For Reservations Call*

*Toll Free 800-366-7616 • Local 706-655-2114
hotelwarmssprings@windstream.net • www.hotelwarmsspringsbb.org*



Call
706.655.9099
For Reservations



Meriwether Country Inn

5675 Spring Street • P.O. Box 279
Warm Springs, Ga 31830

Manchester's Newest Hotel



Cable TV
HBO & ESPN
Copy & Fax Services



BUDGET INN

2546 Roosevelt Highway | Manchester
for reservations call 706.846.1247

Dining

GREENVILLE, GA

Big Chic	706-672-3150
Clinton's	706-672-0200
Court Square Café	706-672-2250

LUTHERSVILLE, GA

4-A's	770-927-9911
County Line Café	770-927-3030
Red Rooster	770-927-1518

MANCHESTER, GA

Big Chic	706-846-3417
Butcher Block Café	706-846-5623
Duck's Trolley	706-846-3006
El Agave Mexican Restaurant	706-846-3089
Fox's Pizza /	
Other Side Restaurant	706-846-2300
MJ's Deli	706-846-2181

WARM SPRINGS, GA

Bulloch House	706-655-9068
Dinner's Ready by Chad	706-655-2066
Mac's Barbeque	706-655-2472
Meriwether Steak Co.	706-655-2563

WOODBURY, GA

Blackbird Café	706-553-3993
Chicken Shack	706-553-3601
Smitty's Café	706-553-5241

MERIWETHER

STEAK CO.
WARM SPRINGS, GA.



1651 WHITE HOUSE PKWY. • WARM SPRINGS, GA 31830

(706) 655-2563

THUR. - 5-9PM, FRI. & SAT. - 5-10PM

BAR OPEN TILL MIDNIGHT FRI. & SAT.

Check out our Facebook page for our
Entertainment Schedule!

Bands & DJ Dance Parties every Month!

Call us for all your celebrations! We have private rooms,
family atmosphere, with a separate bar area, and we would
love to help plan your PERFECT night!

SMITTY'S CAFE

12456 Whitehouse Rd. ~ Woodbury, GA 30293

706-553-5241

Family Owned & Operated

Breakfast

*Delicious
Breakfast
Menu
including
Omelets
Scattered
Hashbrowns
Homemade
Biscuits*

**Served
Mon.-Sat.
7-10:30 a.m.**

Lunch

*Come check
out our
Meat
& Vegetable
Lunch Menu*

*Just Like
Mama Would
Cook It!*

**Served
Mon.-Tue.
10:30 - 2p.m.
Wed.-Sat.
10:30 - 2p.m.**

Dinner

**FULL DINNER
MENU
including
Coffish,
Fried Shrimp,
Hamburger
Steak,
Ribeye Steaks
& Much More!**

**Served
Wed.: 2-8 p.m.
Thur.-Sat.:
2-9 p.m.**

Our Burgers Are Made Fresh Everyday!



The Chicken Shack

706-553-3601

Woodbury, GA

HOME OF 50¢ WEDNESDAY WINGS

Gently restored brick & mortar cafe, located in one of Woodbury's historic early 1900's buildings.



Signature Salads, Sandwiches, and Delicious Desserts

Open Daily 11 a.m.

18118 Main Street | Woodbury, GA 30293
706-553-3993

Dinner's Ready by Chad

*Homemade Lunches
Famous Layered Cakes & Preserves
Take & Bake Frozen Meals*



**5928 Spring Street
Warm Springs, GA 31830**

706.655.2066

Open Monday-Saturday 11am - 2:30pm

Catering Available!



Put Some South
in Your Mouth
"All You Can Eat
Buffet"

*featured in
Georgia Eats!*

Lunch: Tue-Fri & Sun 11am-3pm • Sat 11am-4pm
Dinner: Fri 5pm-7:30pm • Sat 4pm-7:30pm
Closed on Monday (Open on Major Holidays)

706.655.9068



Sun - Thurs 10am - 5pm
Fri & Sat 10am - 6pm



Mon - Fri 11am - 5pm
Sat 1am - 6pm
Sun 10am - 5pm



COURT SQUARE CAFE



Fresh food
Cooked to Order

108 S. Talbotton St.
Greenville, GA 30222
(706) 672 - 2250



courtsquarecafegreenville.com



Serving True Soul Food since 1998

(706) 672-0200



RED ROOSTER

Southern Fried Chicken



64 North Main Street
Luthersville, Ga.
770-927-1518

*Delicious Fried Chicken
Lunch Buffet
Great Southern Food!*

Mon. - Sat. 11 a.m. to 9 p.m. • Closed Sundays



*Serving the
Best Fried Chicken
around for 41 Years!*

Available for Take Out • Catering • Large Groups

Big Chic Manchester
320 N. 5th Avenue

706.846.3417
Mon. – Sat. 10 a.m. – 8:30 p.m.

Big Chic Greenville
990 N. Talbotton St.

706.672-3150
Mon. – Sat. 11 a.m. – 8 p.m.



Georgia's film industry ended the 2018 fiscal year with 455 movie and television projects completed, some of which were filmed right here in Meriwether County

Manchester Development Authority

706-846-5341
manchesterga@windstream.net



Luthersville

Historic Homes, Buildings & Churches
"Gateway to Meriwether County"



A great place to live!

Call 770-927-6885 for more info.

The Parterre



The Parterre redefines southern elegance.

Picturesque parterre gardens, wildflower meadows and rolling grassy fields dotted with ancient trees set the backdrop for your wedding day.

Experience the romance of the Plantation.

8450 Lagrange Highway, Greenville, Georgia 30222

404-969-7281

www.TheParterre.com



*Two convenient locations serving
Meriwether County*



GREENVILLE

121 S. Court Square

706-672-4221

Monday - Friday 9-6

Closed Saturday & Sunday

WOODBURY

18126 Main Street

706-553-3351

Monday - Friday 9-6

Closed Saturday & Sunday

*Prescriptions ready
in minutes - not hours!*

A stone wall with a central plaque that reads "Meriwether Industrial Park" in gold lettering.

Meriwether Industrial Park

WE WELCOME TOURISTS, INDUSTRY, AND ALL VISITORS TO MERIWETHER COUNTY!

**Little White House, Covered Bridge,
Antiques, Arts & Crafts, Restaurants,
and Hotels all within a short drive.**

**Industrial land available and many
people looking for jobs**

**Excellent educational, recreational
and medical facilities**

Access to I-85 at Exit 28

**39 miles from Atlanta
International Airport**

**For More Information, contact:
Meriwether County
Development Authority
17234 Roosevelt Highway, Bldg. B
Greenville, Ga. 30222
706-672-3467
www.MeriwetherIDA.com
J.Fryer@meriwethercountyga.gov**



Valentine Orchard

WEDDING AND EVENT CENTER



CLASSIC SOUTHERN CHARM



82 North Main Street • Luthersville, Georgia • (678) 283-7128
valentineginger@yahoo.com



The Flint River

This 344 mile long river is one of Georgia's most treasured natural resources, offering various adventure opportunities.

FISHING
KAYAKING
CANOEING
PICNICKING

Warm Springs

Welcomes you!



Experience the quaint shops, freshwater springs, hospitality, and traditional Southern charm, nestled against rolling hills.

Home of the Meriwether-Pike Scenic Byway

- Roosevelt's Little White House
- Historic pools and springs
- National Fish Hatchery
- Rosalynn Carter Butterfly Trail
- Unique shops
- Casual & fine dining
- Winery & tasting rooms
- Geocache
- Recreation including hiking, camping, fishing, golfing and horseback riding.



Come and stay a while!

www.WarmSpringsGA.com

[www.Facebook.com/MeriwetherTourism](https://www.facebook.com/MeriwetherTourism)

(706) 655-3322